

# Safety

- Do not cover the ground contact.
- Do not place any material over the lens or LED diode/chip.
- Do not insert objects into the luminaire.
- Do not clean using any solvent based abrasive or aggressive product.
- Do not pull any cables connected to the product.
- Do not direct the luminaire into a person's eyes, as this unit may have an intense light output, which if incorrectly used may cause eye damage.
- Light engines/LEDs and other light sources may heat up, please take care when handling the products.
- The manufacturer will not be deemed liable or held responsible for any damages caused by faults or manufacturing defects that may be present in any of its products or the misuse or incorrect installation of this device. Please refer to our trouble shooting guide for further information.
- The manufacturer will not be held liable for any death(s) or injuries caused by misuse or poor installation or any unreported faults of this product version or versions thereof.
- LEDs are sensitive to electrostatic discharge. Do not touch the surface of the LED module.
- Do not connect to a temporary electricity supply, this may damage the electronics.
- Light fittings with an integrated emergency option come with a separate installation and wiring leaflet. Please refer to this manual for further details. If the manual is unavailable please contact an ALL LED representative for assistance.
- Do not install in areas with; high acid rain, acidic soil, high salt content, coastal environments, high concentration of chemical substances.

# Returns & Faulty Items

- If any problem is encountered during or after installation, please call ALL LED technical department to get the problem resolved as soon as possible.
- Please do not just return the item to the outlet you purchased it from, as you are only entitled to a replacement or refund after the unit has undergone testing and the unit has been confirmed as having a manufacturing defect/fault. Your statutory rights are not affected.
- The manufacturer will not be deemed liable or held responsible for any damages caused by faults or manufacturing defects that may be present in any of its products or the misuse or incorrect installation of this device. Please refer to our troubleshooting guide for further information.
- All goods are supplied under the terms and conditions of ALL LED LTD, a copy of which may be obtained upon written request.



This product is supplied with a limited 3 year guarantee, subject to terms and conditions. The manufacturer will not be deemed liable or held responsible for any damages caused by faults or manufacturing defects that may be present in any of its products or the misuse or incorrect installation of this device. Your statutory rights are not affected.

**ALL LED LTD**  
42 Sedgwick Road,  
Luton,  
LU4 9DT

www.allledgroup.com  
sales@allledgroup.com  
Tel: +44 (0)208 841 9000



# INSTALLATION GUIDE TRAFALGAR ALSQ240CCT/WH

- This product must be installed by a qualified electrical installer.
- All electrical work should be completed in accordance with the latest IET regulations, or any other relevant rules, regulations or laws of the country in which it is being installed.
- This item is suitable for humid environments when installed correctly and carries an ingress protection rating of IP54.
- Ensure the item is isolated from any form of insulation and is adequately ventilated to prevent premature decay of the LED package.
- Ensure power supply is isolated prior to installation, maintenance or performing any other form of electrical work.
- The company MUST be contacted immediately for advice or swift resolution of any matters concerning any of ALL LED's products.

# Technical Specifications

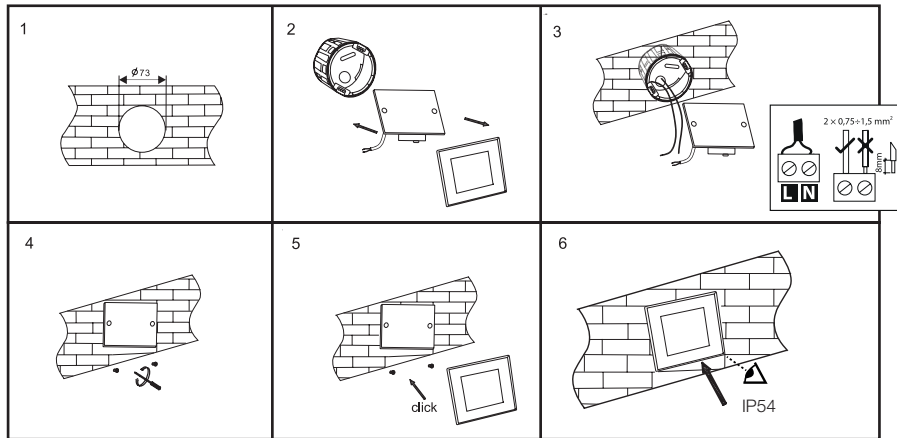
PRODUCT CODE	ALSQ240CCT/WH
LUMINOUS FLUX	165 LM
USEFUL LUMINOUS FLUX	165 LM
CCT	3000K 4000K 6000K
BEAM ANGLE	120°
SDCM	<6
CRI	RA>80
PEAK INTENSITY	49.5CD
OPERATING VOLTAGE	AC220-240V
MAX OUTPUT POWER	3W
OPERATING CURRENT	0.015A
STANDBY POWER	0 W
CLASS	II
BODY MATERIAL	POLYCARBONATE BODY, POWDER COATED POLAR WHITE STAINLESS STEEL 304 FASCIA
CUT OUT	75X75 MM OR 1G BACK BOX
FRAME COLOUR	WHITE
SWITCHING CYCLES	15,000
INGRESS PROTECTION	IP54 (INDOOR USE ONLY)
AMBIENT OPERATING TEMPERATURE	-20°C ~ +40°C
INPUT FREQUENCY	50-60HZ
GUARANTEE	2 YEARS
DIMMABLE	YES (V-PRO RECOMMENDED)
INPUT TYPE	ALTERNATING CURRENT
LIFE TIME	25,000H

**Environmental Protection**  
Waste electrical products should not be disposed of with household waste. Please recycle where facilities exist. Check with your Local Authority or retailer for recycling advice

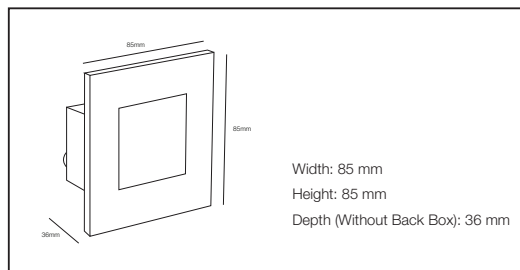


## Installation

1. Prior to beginning the installation, familiarise yourself with the manual.
2. Installation and applicability assessment for the specific conditions need to be carried out by an appropriately qualified professional.
3. The product is suitable for installation/mounting onto non-flammable surfaces (that do not support burning, such as concrete, cast or metal) or normally flammable surfaces (with a point of combustion lower than 200°C, such as wood and wooden materials more than 2mm thick).
4. The product may be installed on the surface or near flammable materials or objects, combustibles, etc. It is necessary to adhere to fire protection measures.
5. Any activity during the installation, operation, adjustment or maintenance of the lamp must be performed after disconnecting the power supply.
6. During the assembly and installation, it is necessary to adhere to the procedures in the drawings.
7. Prior to first use, it is necessary to make sure that the mechanical attachment, electrical connection and conditions are in order.
8. It does not contain a terminal block. Connection may require advice/instruction from a person skilled in the art.
9. The product comes with flexible, inseparable electrical connections led out of the fixture. In the event of damage to the supply, the insulation or other parts of the luminaire product must not be used and must be permanently disconnected from the power supply. Repair or replacement can be performed by a qualified service technician or someone with equivalent qualifications.



## Dimensions (mm)



## Troubleshooting Guide

PROBLEM	CAUSE(S)	SOLUTION(S)
<b>No Light Output From LEDs</b>	No power to drive components.	A qualified installer/electrician should check the primary voltage side of the product to check the input voltage.
	Loose connection on primary side.	Ensure continuous and correct connection between terminals.
	Loose or switched connection/polarity on secondary side.	Ensure continuous and correct connection between terminals. Ensure the polarity is correct; (Red = +, Black = -).
	No output from the driver.	No power entering LED driver. Driver may be faulty and require replacement following investigation.
	Over voltage may have caused damage to the sensitive LED drive components.	These cases are rare and the item may need replacement and/or investigation as to the cause of failure.
<b>LEDs Flashing</b>	Unstable or incorrect input/output voltage/current.	Please only use a stable voltage supply as stipulated earlier for this product. Failure to do so will void the warranty.
	LED driver may be connected to an incompatible dimmer switch	Please remove the dimmer switch and replace with a compatible unit.
	Loose connection on primary side.	Ensure continuous and correct connection between the terminals.
	Loose connection on secondary side.	Ensure continuous and correct connection between terminals. Ensure the polarity is correct; (Red = +, Black = -).
	Wattage overload	Too much power is trying to be drawn from the item. Flashing indicates the overload protection is actively working to prevent any damage to the item. Reduce the load on the DC side of the item.



**ATTENTION**

**IF ANY PROBLEMS PERSIST, PLEASE CALL THE ALL LED TECHNICAL DEPARTMENT FOR FURTHER ASSISTANCE.**